

Plasma Membrane Protein Extraction Kit ab65400

[176 References](#) [2 Images](#)

Overview

Product name	Plasma Membrane Protein Extraction Kit
Assay time	1h 00m
Product overview	<p>Plasma Membrane Protein Extraction Kit ab65400 provides optimized buffers and reagents for effective extraction of plasma membrane proteins from mammalian tissues and cells.</p> <p>Other commercially available methods can only extract the total cellular membrane proteins (combinations of plasma and organelle membrane proteins). The ab65400 kit offers two options: either extract the total cellular membrane proteins, or purify the plasma membrane proteins specifically.</p> <p>The procedure offers consistent yield and high purity (over 90%). Membrane proteins prepared using the kit can be utilized in a variety of applications, such as Western blotting, 2-D gels, and enzyme analyses, etc. The entire procedure takes less than 1 hour.</p>
Notes	This product is manufactured by BioVision, an Abcam company and was previously called K268 Membrane Protein Extraction Kit. K268-50 is the same size as the 50 test size of ab65400.

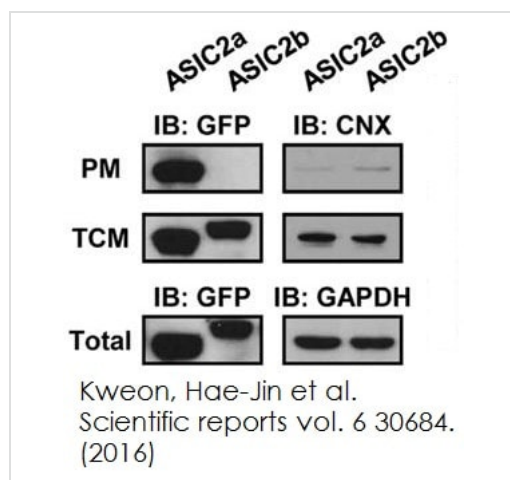
Properties

Storage instructions Store at -20°C. Please refer to protocols.

Components	Identifier	50 tests
Homogenize Buffer	NM	1 x 100ml
Lower Phase Solution	WM	1 x 20ml
Protease Inhibitor Cocktail (Lyophilised)	Red	1 vial
Upper Phase Solution	NM	1 x 20ml

Relevance Membrane Protein Extraction is a method for extraction of membrane proteins from mammalian tissues and cells. Many procedures extract total cellular membrane proteins which is a combination of plasma and organelle membrane proteins.

Images

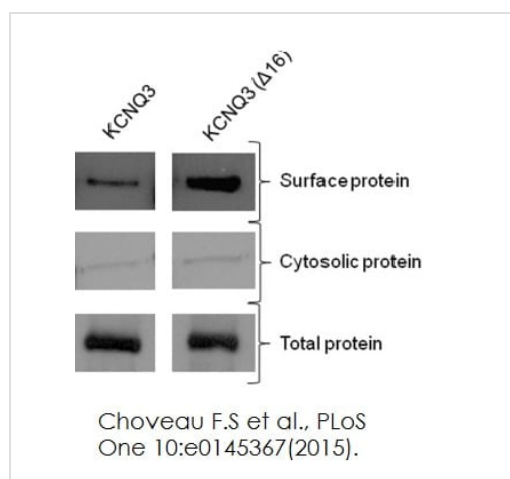


Functional Studies - Plasma Membrane Protein

Extraction Kit (ab65400)

Kweon, Hae-Jin et al., Scientific reports vol. 6 30684., Fig 1, doi:10.1038/srep30684

Western blotting on the plasma membrane (PM) fraction extracted using ab65400, total cellular membrane (TCM) fraction, and total lysate of cells expressing GFP-tagged ASIC2a or ASIC2b was performed using anti-GFP antibody. As controls, the PM and the TCM fractions were blotted using anti-calnexin (CNX) antibody, and total lysate was blotted using anti-GAPDH antibody.



Membrane protein assay - ab65400

Image from Choveau F.S et al., PLoS One 10(12), Fig 2C. Doi: 10.1371/journal.pone.0145367. Reproduced under the Creative Commons license <http://creativecommons.org/licenses/by/4.0/>

Cell membrane protein was collected using plasma membrane protein extraction kit (ab65400). The upper panels show the plasma membrane myc-tagged protein; the middle panels show the cytosolic myc-tagged proteins and the lower panels show the total myc-tagged protein from CHO (Chinese Hamster ovary) whole-cell lysates.

Please note: All products are "FOR RESEARCH USE ONLY. NOT FOR USE IN DIAGNOSTIC PROCEDURES"

Our Promise to you: Quality guaranteed and expert technical support

- Replacement or refund for products not performing as stated on the datasheet
- Valid for 12 months from date of delivery
- Response to your inquiry within 24 hours

- We provide support in Chinese, English, French, German, Japanese and Spanish
- Extensive multi-media technical resources to help you
- We investigate all quality concerns to ensure our products perform to the highest standards

If the product does not perform as described on this datasheet, we will offer a refund or replacement. For full details of the Abpromise, please visit <https://www.abcam.com/abpromise> or contact our technical team.

Terms and conditions

- Guarantee only valid for products bought direct from Abcam or one of our authorized distributors