

# Recombinant Human HIP1R protein ab131891

1 Image

### Description

---

**Product name** Recombinant Human HIP1R protein

**Expression system** Wheat germ

**Accession** **O75146**

**Protein length** Full length protein

**Animal free** No

**Nature** Recombinant

**Species** Human

**Sequence**

MNSIKNVPARVLSRRPGHSLEAEREQFDKTQAISISKAIN  
QEAPVKEKH  
ARRIILGTHHEKGAFTFWSYAIGLPLPSSSILSWKFCHVLHK  
VLRDGHPN  
VLHDCQRYRSNIREIGDLWGHLHDRYGQLVNVYTKLLLT  
KISFHLKHPQF  
PAGLEVTDEVLEKAAGTDVNNIFQLTVEMFDYMDCELKLS  
ESVFRQLNTA  
IAVSQMSSGQCRLAPLIQVIQDCSHLYHYTVKLLFKLH  
SCLPADTLQGHR  
DRFHEQFHSLRNFFRRASDMLYFKRLIQIPRLPEGPPN  
FLRASALAEHIK  
PVVVPIEEAPEDEEPENLIEISTGPPAGEPVVADLFDQ  
TFGPPNGSVKD  
DRDLQIESLKREVEMLRSELEKIKLEAQRYIAQLKSQ  
VNALEGELEEQRK  
QKQKALVDNEQLRHELAQLRAAQLEGERSQGLREEA  
ERKASATEARYNKL  
KEKHSELVHVHAELLRKNADTAKQLTVTQQSQEEVA  
RVKEQLAFQVEQVK  
RESELKLEEKSDQLEKLRKRELEAKAGELARAQEAL  
SHTEQSKSELSSRLD  
TLSAEKDALSGAVRQREADLLAAQSLVRETEAALS  
REQQRSSQEQQGELQG  
RLAERESQEQLRQRLLEQFAVLRGAAAEEAAGILQ  
DAVSKLDDPLHLRC  
TSSPDYLVSRAQEALDAVSTLEEGHAQYLTSLADA  
SALVALTRFSHLAA

DTIINGGATSHLAPTPADRLIDTCRECGARALELMGQLQD  
 QQALRHMQA  
 SLVRTPLQGILQLGQELKPKSLDVRQEELGAVVDKEMAAT  
 SAAIEDAVRR  
 IEDMMNQARHASSGVKLEVNERILNSCTDLMKAIRLLVTTT  
 TSLQKEVE  
 SGRGAATQQEFYAKNSRWTEGLISASKAVGWGATQLVEA  
 ADKVVLTGKY  
 EELVCSHEIAASTAQLVAASKVKANKHSPHLSRLQECSR  
 TVNERAANVV  
 ASTKSGQEQIEDRDTMDFSGLSLIKLLKKQEMETQVRVLEL  
 EKTLEAERM  
 LGELRKQHYVLGASGSPGEEVAIRPSTAPRSVTTKKPPL  
 AQKPSVAPRQ DHQLDKKDGYPALVNY

**Predicted molecular weight** 146 kDa including tags

**Amino acids** 1 to 1068

### Specifications

---

Our **Abpromise guarantee** covers the use of **ab131891** in the following tested applications.

The application notes include recommended starting dilutions; optimal dilutions/concentrations should be determined by the end user.

**Applications** Western blot  
 SDS-PAGE  
 ELISA

**Form** Liquid

**Additional notes** Protein concentration is above or equal to 0.05 ug/ul.

### Preparation and Storage

---

**Stability and Storage** Shipped on dry ice. Upon delivery aliquot and store at -80°C. Avoid freeze / thaw cycles.  
 pH: 8.00  
 Constituents: 0.31% Glutathione, 0.79% Tris HCl

### General Info

---

**Function** Component of clathrin-coated pits and vesicles, that may link the endocytic machinery to the actin cytoskeleton. Binds 3-phosphoinositides (via ENTH domain). May act through the ENTH domain to promote cell survival by stabilizing receptor tyrosine kinases following ligand-induced endocytosis.

**Tissue specificity** Brain, heart, kidney, pancreas, and liver, but not in lung or placenta.

**Sequence similarities** Belongs to the SLA2 family.  
 Contains 1 ENTH (epsin N-terminal homology) domain.  
 Contains 1 I/LWEQ domain.

**Domain** Binds F-actin via the talin-like I/LWEQ domain.

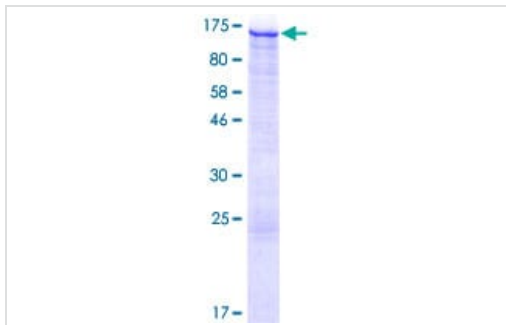
**Cellular localization** Cytoplasm > perinuclear region. Endomembrane system. Cytoplasmic vesicle > clathrin-coated

vesicle membrane. Membrane-associated protein, mainly localized at the endocytic compartments and in the perinuclear region.

---

## Images

---



12.5% SDS-PAGE stained with Coomassie Blue showing ab131891 at approximately 145.8 kDa.

SDS-PAGE - Recombinant Human HIP1R protein  
(ab131891)

**Please note:** All products are "FOR RESEARCH USE ONLY. NOT FOR USE IN DIAGNOSTIC PROCEDURES"

## Our Abpromise to you: Quality guaranteed and expert technical support

---

- Replacement or refund for products not performing as stated on the datasheet
- Valid for 12 months from date of delivery
- Response to your inquiry within 24 hours
- We provide support in Chinese, English, French, German, Japanese and Spanish
- Extensive multi-media technical resources to help you
- We investigate all quality concerns to ensure our products perform to the highest standards

If the product does not perform as described on this datasheet, we will offer a refund or replacement. For full details of the Abpromise, please visit <https://www.abcam.com/abpromise> or contact our technical team.

## Terms and conditions

---

- Guarantee only valid for products bought direct from Abcam or one of our authorized distributors