



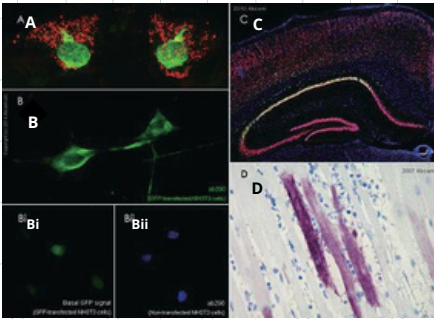
GFP Antibodies - Explore the mystery of GFP

GFP antibodies can be used to amplify weak GFP signals or perform IP experiments.

Our top antibody - GFP antibody (ab290) has a high citation rate and customer reviews. It is the most frequently cited GFP antibody on CiteAb (more than 3,000 citations) and highly rated in all proven applications.

Anti-GFP antibody (ab290)

Been tested by flow cytometry , IHC , ICC , IP , WB , available for ChIP



Experimental data from customer's GFP antibody (ab290).

- A:** Showing CD8-GFP localization in Kenyon cell nucleus with ab290 dilution 1:20,000.
- B:** NIH3T3 cells transfected with GFP, ab290 dilution ratio is 1:200.
- Bi:** In the same sample as (B) Basal expression level of GFP—no antibody used.
- Bii:** untransfected NIH3T3 cells (control).
- C:** Mouse brain tissue section stained with NeuN (red), DAPI (blue), and GFP-cre (GFP antibody ab290, green, diluted at a ratio of 1:1,000). Yellow indicates colocalization with NeuN.

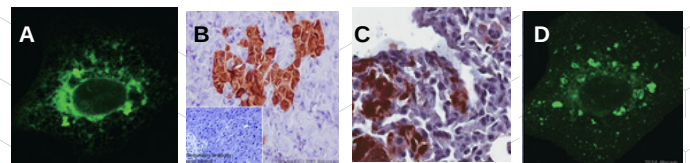
Anti-GFP antibody (ab183734)

BEST choice of rabbit monoclonal antibody

Our top sale - **ab290** is a rabbit polyclonal antibody, and we have also developed **RabMAb®** rabbit monoclonal antibody products (**ab183734**). Rabbit monoclonal antibodies have high specificity and consistency due to the excellent antigen recognition ability of the rabbit immune system

RabMAb® GFP antibody experimental data from customers.

- A:** GFP-Sec61 β -transfected BHK cells with ab183734 dilution 1:1,000.
- B:** Mouse pancreas tissue, ab183734 diluted 1:100.
- C:** Mouse lung tumor tissue, ab183734 diluted 1:250.
- D:** LAMP1-EG-FP transfected MDBK cells with ab183734 dilution 1:2,000.

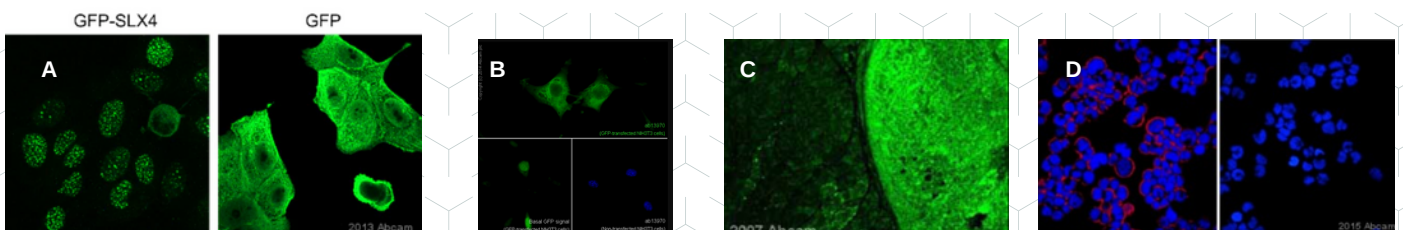


Anti-GFP antibody (ab13970)

Chicken polyclonal to GFP

Experimental data from customer's GFP antibody (ab13970).

- A:** ab13970 staining GFP in U-2 OS (Human bone osteosarcoma epithelial cell line) cells by ICC/IF, with the ab13970 (1/1000) for 1 hour at 25°C.
- B:** ab13970 staining GFP in GFP-transfected NIH/3T3 (Mouse embryo fibroblast cell line) cells, with ab13970 at 1/2000 dilution overnight at +4°C
- C:** ab13970 staining GFP + tumor in mouse muscle cells by ICC/IF, Cells were formaldehyde fixed and blocked with 3% BSA for 1 hour at 24°C prior to incubation with the primary antibody (1/500).
- D:** Immunocytochemical / Immunofluorescence analysis of cytopspined HEK-293 cells (Human epithelial cell line from embryonic kidney) transfected with GFP, labeling GFP with ab13970 at 1/200 incubated for 16 hours at 4°C with 1% BSA in PBS.



abID	Product Name	Application
Epigenetics		
ab1791	Anti-Histone H3 antibody - Nuclear Loading Control and ChIP Grade	ChIP, ChIP/Chip, CHIPseq, Flow Cyt, ICC/IF, IHC-Fr, IHC-P, IP, WB
ab8580	Anti-Histone H3 (tri methyl K4) antibody - ChIP Grade	ChIP, ChIP/Chip, CHIPseq, Flow Cyt, ICC/IF, IHC-Fr, IHC-P, IP, WB
ab8898	Anti-Histone H3 (tri methyl K9) antibody - ChIP Grade	ChIP, ChIP/Chip, CHIPseq, Flow Cyt, ICC/IF, IHC-Fr, IHC-P, WB
ab4729	Anti-Histone H3 (acetyl K27) antibody - ChIP Grade	ChIP, ChIP/Chip, CHIPseq, ICC/IF, IHC-Fr, IHC-P, WB
ab8895	Anti-Histone H3 (mono methyl K4) antibody - ChIP Grade	ChIP, ChIP/Chip, CHIPseq, Flow Cyt, ICC/IF, IHC-P, IP, WB
ab9050	Anti-Histone H3 (tri methyl K36) antibody - ChIP Grade	ChIP, ChIP/Chip, CHIPseq, ICC/IF, IHC-P, WB
ab1220	Anti-Histone H3 (di methyl K9) antibody [mAbcam 1220] - ChIP Grade	ChIP, ELISA, Flow Cyt, ICC/IF, IHC-Fr, IHC-P, IP, WB
ab6002	Anti-Histone H3 (tri methyl K27) antibody [mAbcam 6002] - ChIP Grade	ChIP, ChIP/Chip, ELISA, Flow Cyt, ICC/IF, IHC-P, WB
Oncology/Immunology		
ab15580	Anti-Ki67 antibody	Flow Cyt, ICC/IF, IHC-P
ab6326	Anti-BrdU antibody [BU1/75 (ICR1)]	Flow Cyt, ICC/IF, IHC-Fr, IHC-P
ab28364	Anti-CD31 antibody	ICC/IF, IHC-Fr, IHC-P, WB
ab16667	Anti-Ki67 antibody [SP6]	Flow Cyt, ICC/IF, IHC-Fr, IHC-P, WB
ab16048	Anti-Lamin B1 antibody - Nuclear Envelope	ICC/IF, IHC-Fr, IHC-P, WB
ab34710	Marker Anti-Collagen I antibody	ELISA, ICC/IF, IHC-Fr, IHC-P, IP, WB
ab6640	Anti-F4/80 antibody [CI:A3-1]	Flow Cyt, ICC/IF, IHC-Fr, IP, WB
ab32072	Anti-c-Myc antibody [Y69]	Flow Cyt, ICC/IF, IHC-P, IP, WB
Cardiovascular		
5694	Anti-alpha smooth muscle Actin antibody	ELISA, ICC, ICC/IF, IHC-FoFr, IHC-Fr, IHC-P, WB
Tag and Loading Control Antibodies		
ab290	Anti-GFP antibody - ChIP Grade	ChIP, ChIP/Chip, ELISA, Flow Cyt, ICC/IF, IHC-Fr, IHC-P,
ab6276	Anti-beta Actin antibody [AC-15]	IP, WB ELISA, ICC/IF, IHC-Fr, IHC-P, WB
ab8245	Anti-GAPDH antibody [6C5] - Loading Control	ELISA, ICC/IF, IHC-Fr, WB
ab13970	Anti-GFP antibody	ICC/IF, IHC-Fr, IHC-P, WB
ab8227	Anti-beta Actin antibody	ELISA, Flow Cyt, ICC/IF, IHC-Fr, IHC-P, IP, WB
ab8226	Anti-beta Actin antibody [mAbcam 8226] - Loading	Flow Cyt, ICC/IF, IHC-Fr, IHC-P, IP, WB
ab9485	Control Anti-GAPDH antibody - Loading Control	ELISA, Flow Cyt, ICC/IF, IHC-Fr, IHC-P, IP, WB
ab6556	Anti-GFP antibody	Flow Cyt, ICC/IF, IHC-Fr, IHC-P, IP, WB
ab9110	Anti-HA tag antibody - ChIP Grade	ChIP, ChIP/Chip, ELISA, Flow Cyt, ICC/IF, IP, WB
ab6046	Anti-beta Tubulin antibody - Loading Control	ELISA, ICC/IF, IHC-Fr, IHC-P, IP, WB
ab9484	Anti-GAPDH antibody [mAbcam 9484] - Loading Control	Flow Cyt, IHC-P, WB
ab7291	Anti-alpha Tubulin antibody [DM1A] - Loading Control	Flow Cyt, ICC/IF, IHC-Fr, IHC-P, IP, WB
ab9361	Anti-beta Galactosidase antibody	ELISA, Flow Cyt, ICC/IF, IHC-Fr, IHC-P, WB

Abcam Hong Kong Authorization Distributor:

